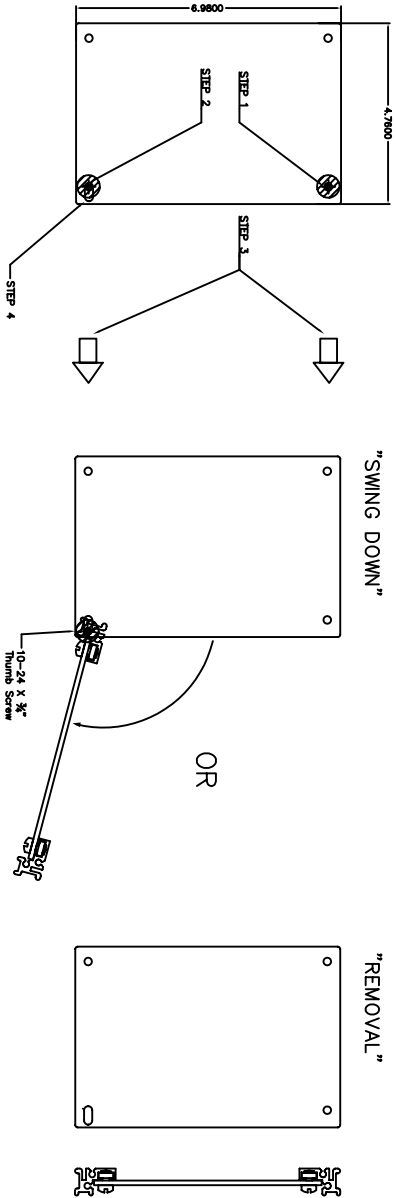
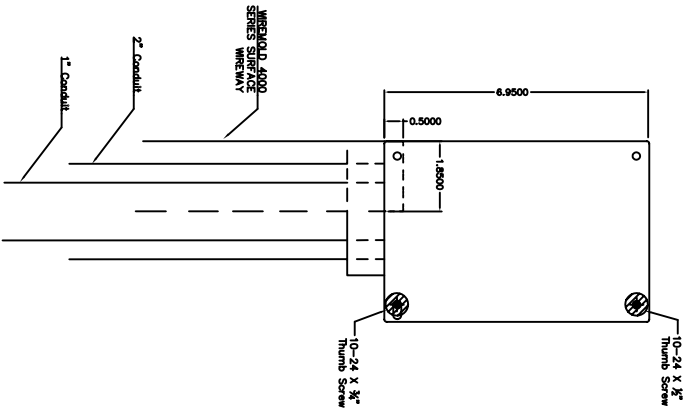
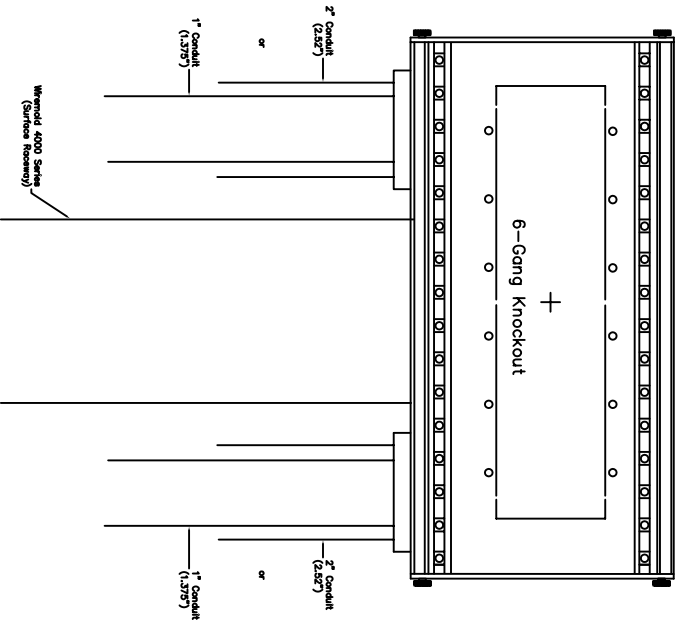
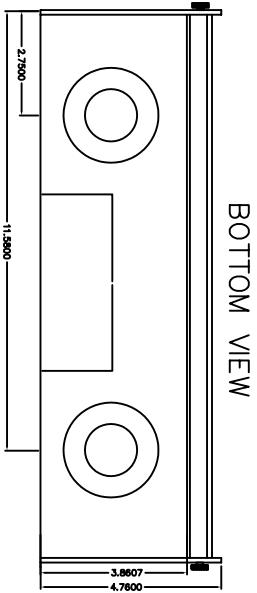
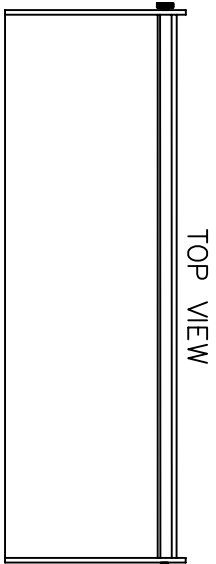


Proposed Mounting and Conduit / Raceway Terminations

Part: MPS-SMC-16MU-SD-KO



1320 E. Saint Andrew Place
 Unit D
 Santa Ana, CA 92705 USA
 714-641-5665
 FAX: 714-641-5664



PROCEDURE TO "SWING DOWN" ASSEMBLY

- STEP-1: REMOVE KNURLED THUMB SCREW (10-24 X 1/2")
- STEP-2: LOOSEN KNURLED THUMB SCREW (10-24 X 3/4")
- STEP-3: PULL ASSEMBLY FORWARD.
- STEP-4: PIVOT ASSEMBLY ON LOWER KNURLED THUMB SCREW

OR

PROCEDURE TO REMOVE ASSEMBLY

- STEP-1: REMOVE KNURLED THUMB SCREW (10-24 X 1/2")
- STEP-2: REMOVE KNURLED THUMB SCREW (10-24 X 3/4")
- STEP-3: REMOVE ASSEMBLY

NOTE: ASSEMBLY = MPS PANELS + UPPER AND LOWER EXTRUSION.

NO.	DATE	DESCRIPTION

DRAWN BY	JR	DATE	02/01/2016
CHECKED BY	JR	DATE	02/01/2016
APPROVED BY	SDR	DATE	02/02/2016

THE DESIGN, CONTENTS AND SPECIFICATIONS REPRESENTED HEREIN ARE AND SHALL REMAIN THE PROPERTY OF SIGT INC. AND SHALL NOT BE REPRODUCED, COPIED OR DISCLOSED TO OTHERS WITHOUT THE WRITTEN CONSENT OF SIGT, INC.

CLIENT/PROJECT

SIGT, INC

DRAWING TITLE
 MPS
 SWING-DOWN
 16MU-SMC-ENCLOSURE
 WITH-KNOCKOUTS
 MOUNTING-DETAIL

REVISION	SCALE	NTS	REV	B	SIZE

PROJECT NO.
 BACK-BOX-W/KO

DWG. NO.

SMC-SD

LAST PLOT