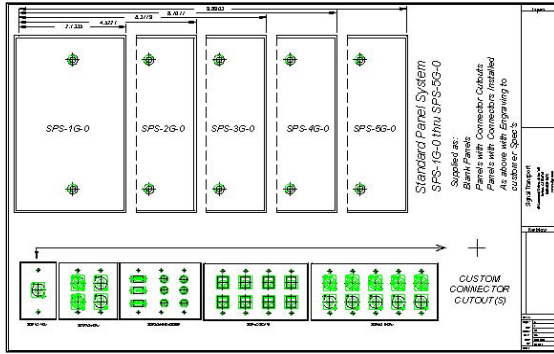


Standard System Panels (SPS):

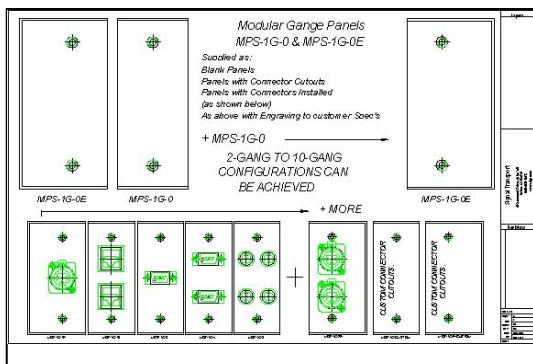


Gang Panels:

Offering a range of Aluminum or Composite* panels to fit industry standard 1 - 5 Gang outlet boxes. Aluminum panels have a beveled edge and are brushed and anodized black (other colors on request). Composite* panels comes in matte black, white and silver or brushed silver and can be beveled if required. Panels are supplied as blanks, blanks with machined cutouts for connectors, with or without engraving to customer specifications or complete with connectors and/or controls.

19" Rack Panels:

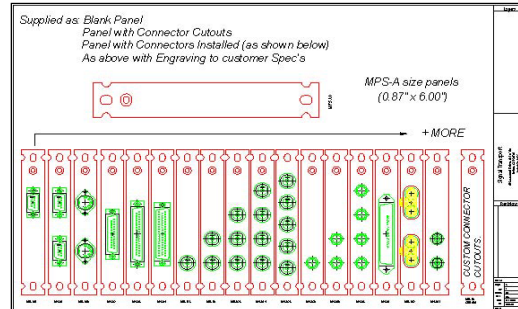
Also offering Aluminum or Composite* compatible EIA standard 19" rack panels, 1RU thru 5RU. Rack Panels supplied as blanks, blanks with machined cutouts, blanks with cutouts and engraving or blanks complete with connectors and/or controls



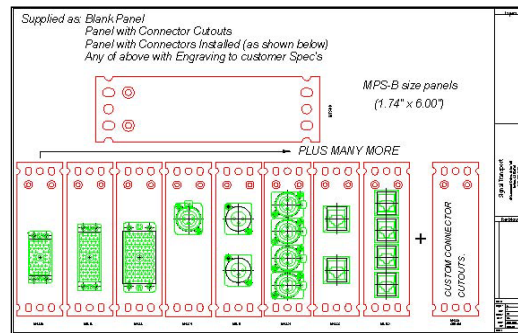
Modular Panel Systems (MPS-1G/GE): Offering a range of Aluminum or Composite* Modular Ganged panels to fit industry standard 2 to 10 gang outlet boxes. This System comprises a **Start** and **End** panel (MPS-1GE) with **Filler** panels (MPS-1G) to achieve the desired length. The

Aluminum panels have beveled edges and are brushed and anodized black (other colors on request). Composite* panels comes in matte black, white and silver or brushed silver and can be beveled if required. Panels are supplied as blanks, blanks with machined cutouts for connectors, blanks with cutouts and engraving to customer specifications or blanks complete with all connectors.

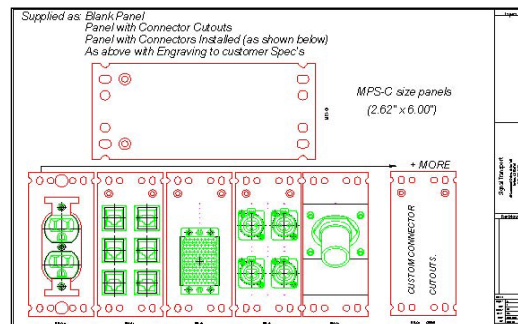
Modular Panel System (MPS): Also offering our popular range of off-the-shelf modular panels in:



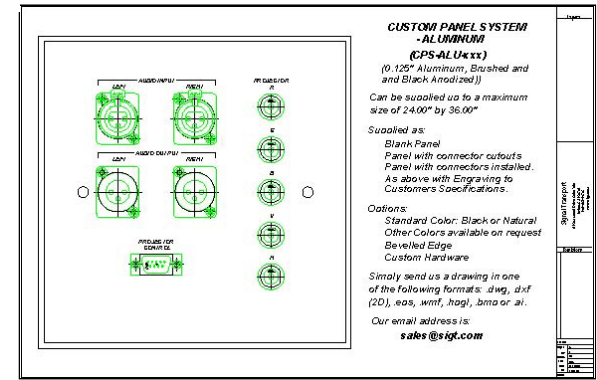
A size: (0.875" by 6.00")



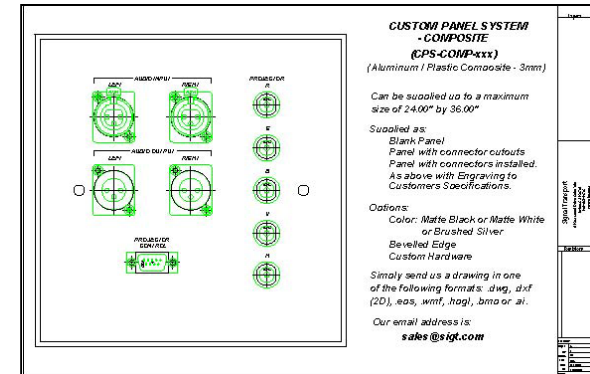
B size: (1.75" by 6.00")



C sizes: (2.625" by 6.00")
Plus **D, E, F** and **L** sizes.



Custom Panel System (CPS): Offering custom Aluminum or Composite* panels any size and shape up to 24.00" by 36.00". Standard panel thickness is 0.125" (1/8") for the aluminum and 3mm for the Composite* (other thicknesses available). Panels supplied as blanks, blanks with machined cutouts for connectors and/or controls, blanks with machined cutouts and engraving or blanks complete with connectors and/or controls and engraving to customer specifications.



The advantage of using a composite material is SPEED, resulting in custom panels in days instead of weeks because the finish is built into the material..

* The Composite material we use is made of two strong sheets of 0.012" aluminum bonded to a solid black polyethylene core. Finishes are matte black, white and silver or brushed silver. The laminated construction produces a rigid and durable product that will stand up to the rigors of every day use