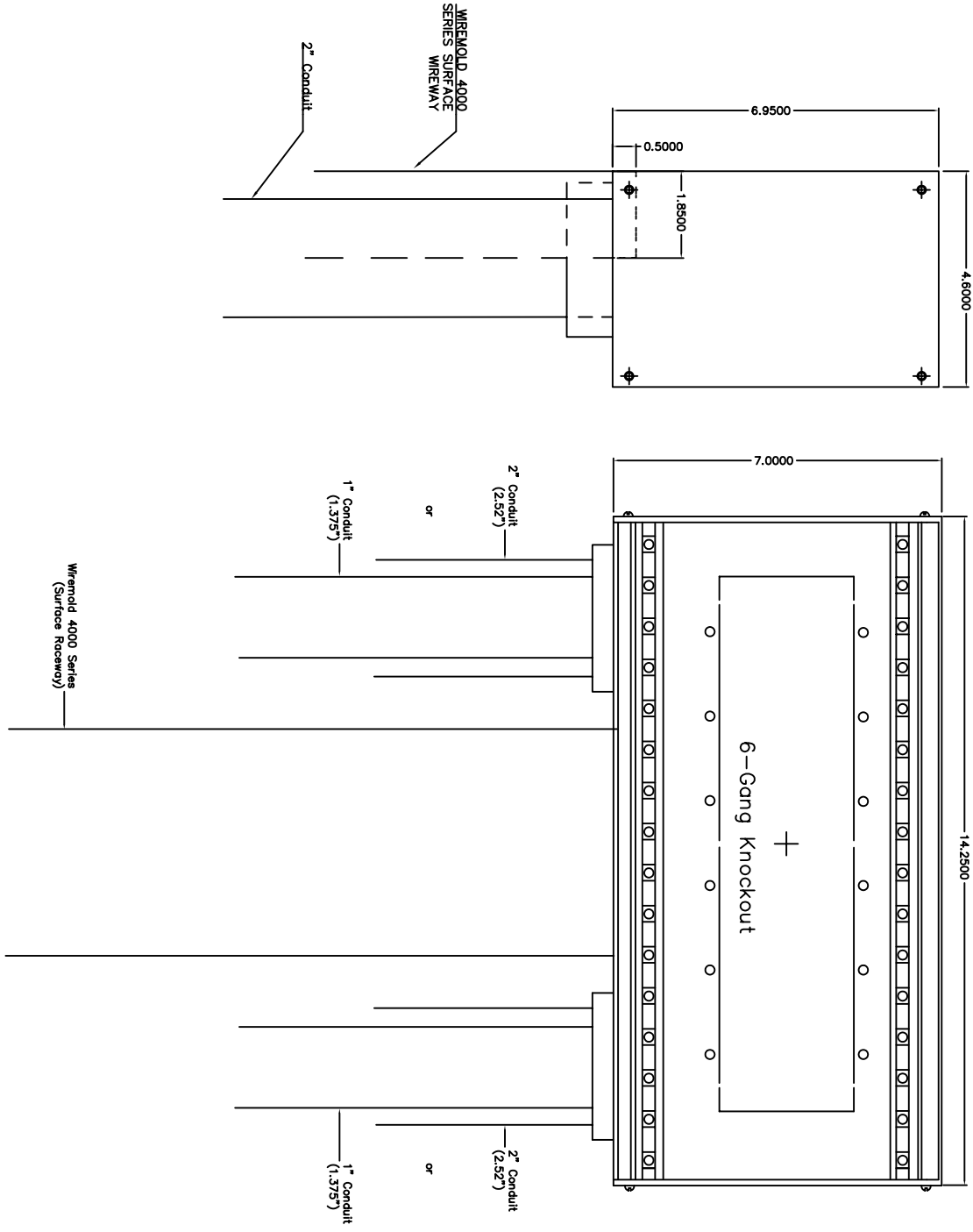


|                          |        |
|--------------------------|--------|
| MPS-SMC-BACKBOX SCHEDULE |        |
| P/N                      | LENGTH |
| MPS-BOX-16MU-KO          | 14.25" |

Material: 16 Gauge Steel  
Finish: Black Textured Powder Coat.

Proposed Mounting and Conduit / Raceway Terminations

Part: MPS-SMC-16MU-KO



**Sigt** Inc  
P.O. Box 1028  
Lake Forest, CA 92650  
USA  
714-641-5665  
FAX: 714-641-5664

| ISSUES | NO. | DATE | DESCRIPTION |
|--------|-----|------|-------------|
|        |     |      |             |

|             |     |      |            |
|-------------|-----|------|------------|
| DRAWN BY    | JR  | DATE | 02/02/2013 |
| CHECKED BY  | JR  | DATE | 02/02/2013 |
| APPROVED BY | SDR | DATE | 02/14/2013 |

THE DESIGN CONCEPTS AND SPECIFICATIONS REPRESENTED HEREIN ARE THE PROPERTY OF SIGT, INC. NO PORTION THEREOF SHALL BE REPRODUCED OR COPIED OR DISCLOSED TO OTHERS WITHOUT THE WRITTEN CONSENT OF SIGT, INC.

CLIENT/PROJECT

SIGT, INC

DRAWING TITLE  
MPS  
BACK-BOX-16MU  
WITH-KNOCKOUTS  
MOUNTING-DETAIL

| REVISION | SCALE | NTS | REV | SIZE |
|----------|-------|-----|-----|------|
|          |       |     | C   |      |

PROJECT NO.  
BACK-BOX-W/KO

DWG. NO.  
**SMCBBKO**  
US1\_P101