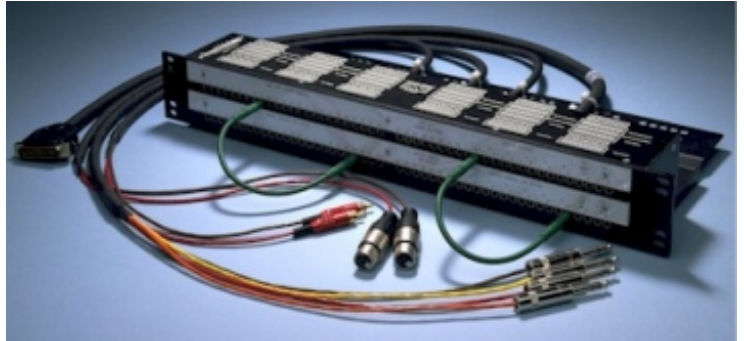


Studio Kit Features:

- Affordable Studio Wiring Systems for most combinations of consoles and recording systems.
- Off-the-shelf availability of most kits.
- Plug-n-Play Systems, require no stripping, crimping, punch-downs or soldering to install, it's all done for you.
- Precisely matched to the requirements of each particular combination to insure highest level of performance.
- Choice of TT or 1/4" TRS patch bay Kits.
- Easy to install and re-configure, only a screw driver is needed.
- Standard cable lengths of 10ft or 25ft are off-the-shelf, custom lengths take a little longer!



Project Patch Studio Kits

There has been a paradigm shift in the recording industry as it applies to equipment. For the past several years, the cost of equipment has been going down while its quality has been going up. Digital technology for both recording systems and consoles is now within the reach of more and more people. More importantly, the most aggravating question posed by the home/project studio revolution is: "I just bought all this great recording equipment, but how do I hook it all together and know it's working right and not compromising my sound?"

Signal Transport provides the long-awaited answer with Project Patch Studio Kits™. Project Patch Studio Kits are complete "plug-and-play" studio wiring and patch bay systems. Each kit is pre-configured to precisely match the requirements of a particular combination of console and recording devices. Currently over 160 configurations are available and ready for immediate delivery.

Studio Kits include premium quality patch bays (either Project Patch bantam or Project Patch TRS 1/4") plus all necessary wiring and properly wired connectors for interfacing with the console, recorders, and some limited quantity of outboard signal processing equipment (additional signal processing equipment can easily be added at the time of order or at a later date). Because Studio Kits eliminate any possibility of polarity reversal or improper grounding, optimum performance of the connected recording system is assured.

Studio Kits are manufactured using only the highest quality components, including custom-made Belden cables and Neutrik or Switchcraft connectors (Custom Kits using other cable type/connector combinations are available. Contact us for more information). Project Patch and Project Patch TRS patch bays employ an exclusive rear connector and jumper system which allows reconfiguring patch points and changing patch point mode (normalled, mult) without stripping, crimping, punching down or soldering a single wire.

Studio Kits provide the easy answer to the complex problem of wiring your studio system. And since all Studio Kits components are in stock for immediate delivery, you can order a kit today and be recording tomorrow.