

Swing Rack Installation Instructions

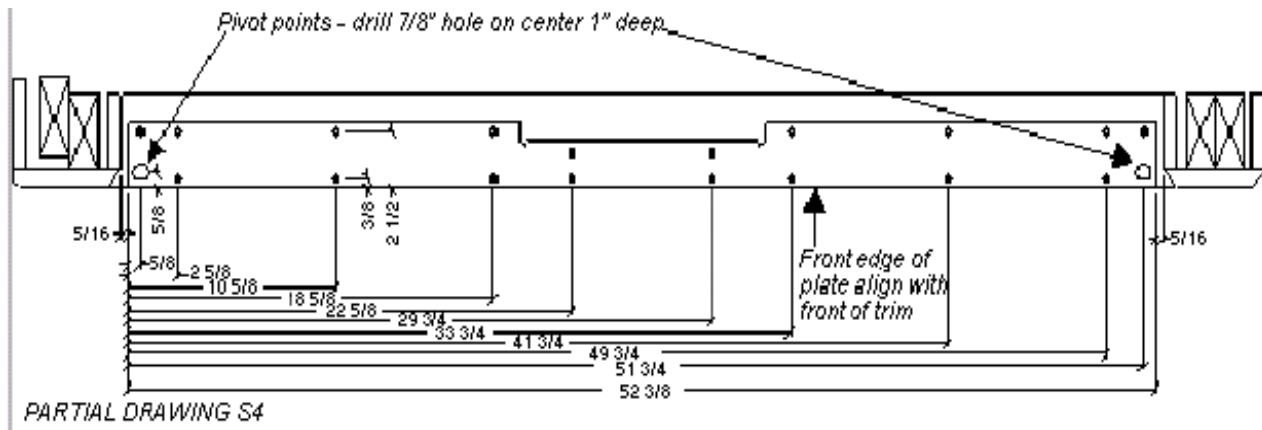
Parts Identification:

Part Number	Qty/Pair	Description	Material
ZSS-FACEFRAME-45RU	2	Welded 19" x 45 RU rack frame with rack rail and pivot pegs installed	1" x 2" tubular steel with 14ga sheet metal kick plate
ZSS-PLATE2	2	Combo Pivot/Strike plate for pair of racks, with pivot bushing installed. TWO ARE MARKED "TOP"	1/8" flat plate steel with strike flange
ZSS-AUX1	2	Cable tie bar, rear kick horizontal	Flat 14 ga steel plate
ZSS-STRIKE1	2	Scab plate closes opposite rack against swing filler	12 ga steel plate with 14 ga spacer
ZSS-FILLER-45RU	1	Swing space filler and latch panel	14 ga steel , with latches installed
1/4-20 x 1/2 truss head	8	for mounting strike plate and tie bar	
1/4-20 x 1/2 allen cap	4	for assembling filler to rack	

Procedure:

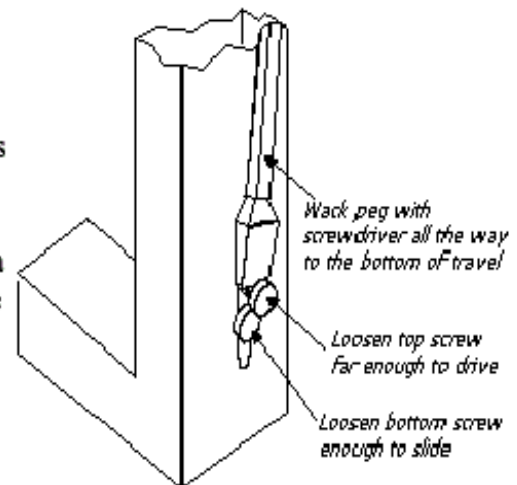
The Swing Rack pair installs into a framed and trimmed wall opening. Successful installation depends on the opening being square and plumb to a high degree of accuracy. During the installation you have the opportunity to adjust for minor (+/- 1/8") variations.

1. Locate Z SS-PLATE2 pivot/strike plate marked "TOP" at the top of the opening. If the pivot clearance holes are not drilled in the frame, mark the location through the plate and drill them at this time. Center the plate and position it as shown in drawing S4. Mount with 2 #10 flat head sheet metal screws to hold it in place temporarily.
2. Place the other pivot plate at the bottom of the opening loosely. If the pivot clearance holes are not drilled in the frame, do it at this time. **Do not screw down yet..**

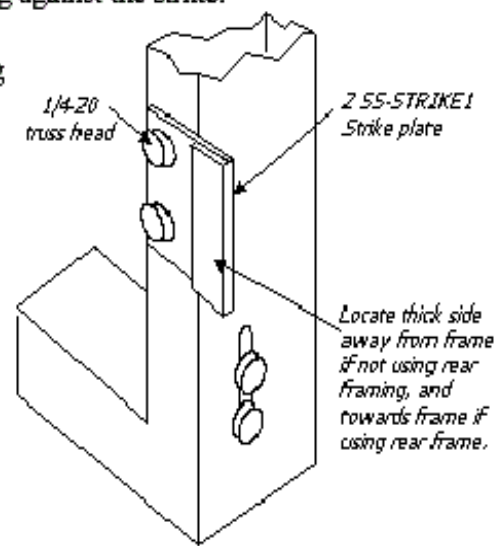


Hold the rack frames in place and slide their pivot pegs into the pivot bushings. Close the racks against the pivot plate strike.

1. Slide the bottom pivot plate around, watching the gap between the rack frame and the pivot plate, and adjusting so that the gap is as even as possible and the racks close as neatly as possible. **If this is not possible, you must move the top plate to shift the rack over.**
2. Keeping the bottom plate from shifting, open one rack at a time and make marks through the mounting holes onto the frame.
3. Slide the pivot pegs out again and remove the racks.
4. Permanently screw down the bottom and top plates with flat head screws.
5. Replace the frames.
6. Install the swing filler panel with (4) 1/4-20 x 1/2" grade 5 allen cap screws. You may choose to install it to either rack depending on which way you wish the first rack to open. Adjust the latch so that it pulls down snug against the strike.
7. Install the strike plates on the rack opposite from the swing filler panel. Put them at the bottom and top on the matching 2-bolt hole pattern. Use 2 truss head screws each.
8. Install the cable tie bar with 2 truss head screws. Tie bar installs across the back of the kick plate to the two weld nuts.



PIVOT PEG ADJUSTMENT



STRIKE PLATE INSTALLATION