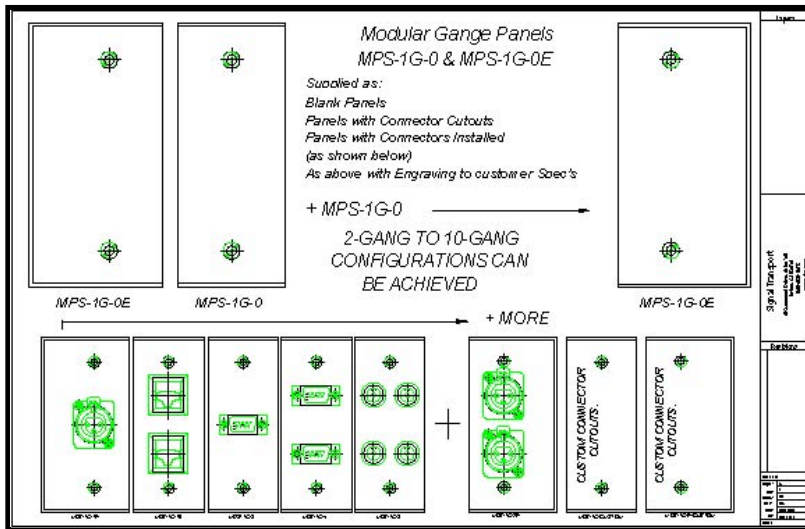


A System Integration Solution

Introducing a **new** Modular Panel System product line, **MPS-Gang Panels**. This product give you the flexibility to configure and to change the connector interface to suite your clients varying needs before and after installation. The system is based on 2 base panels, **MPS-1G-0E**, which is used to **start** and **end** a group of panels and the **MPS-1G-0** which is used as a filler to configure to the sizes required whether that be 3-Gang, 4-Gang, or all the way up to 10-Gang.

These 2 panels are supplied as blanks or blanks with cutouts for any type and quantity of connector to fit the available space. The available space for the connectors is determined by the internal dimensions of the electrical



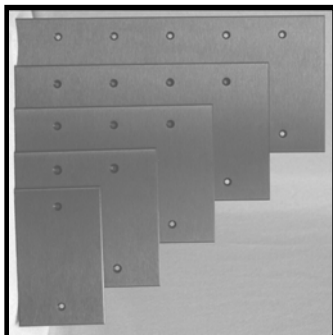
Gang box the panels are attached to. In all cases you have 2.90" height with widths varying from 3.75" for a 2-Gang to 18.20" for a 10-Gang box.

On the left you can see the concept together with some sample panels with connectors installed.

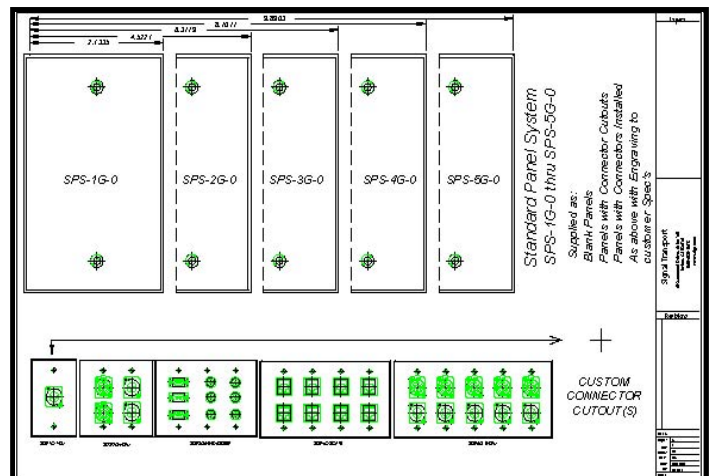
The panels are supplied with or without connectors and can be engraved to your specifications.

Request an MPS-1G Worksheet to assist your layout and determine cost.

Introducing a **new** Standard Panel System product line, **SPS-Gang Panels**. This product line is full size Gang panels offered from 1-Gang to 5-Gang, larger sizes can be supplied but not off-the-shelf. These panels are supplied as blanks or blanks with cutouts for any type and quantity of connector to fit the available space. As above, the space available is determined by the internal dimension of the electrical Gang box.



On the right you can see the concept together with some sample connectorized panels. As above they are supplied with or without connectors and can be engraved to your specifications.



Request an SPS-1G Worksheet to assist in your layout and

determine cost.

Visit our Website – www.signt.com – or give us a call at (949) 859-9615 for information and pricing on all of our products. Thanks.