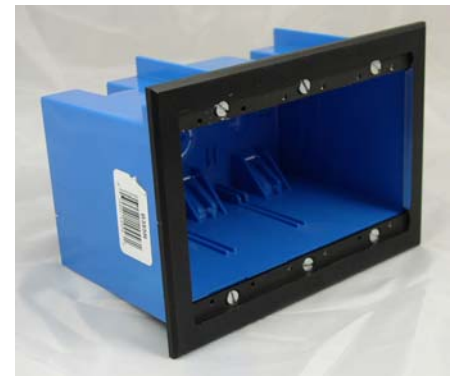
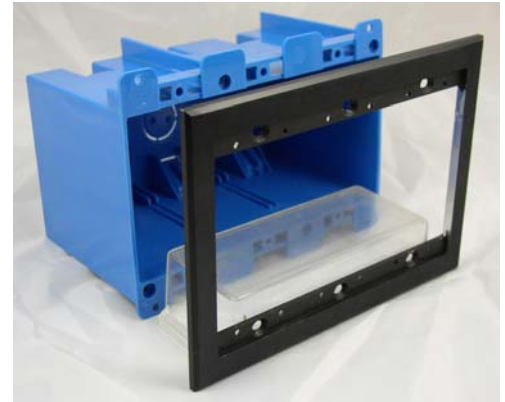
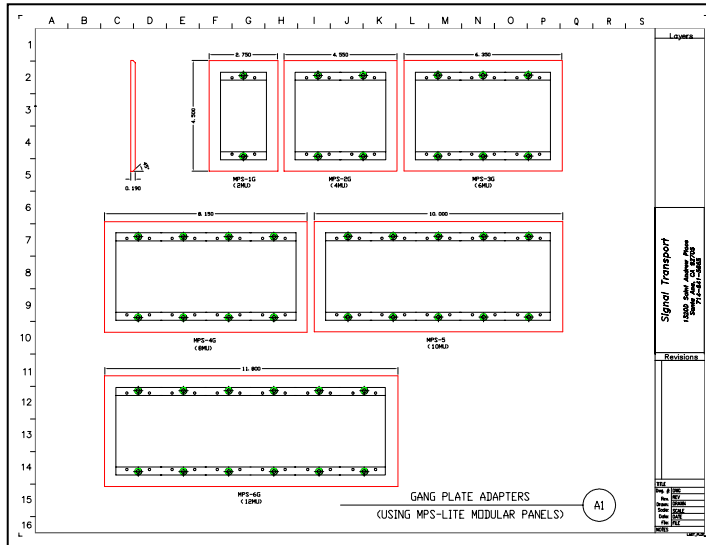


# A System Integration Solution

Introducing our new **Adapter Wall Plate** for our **Lite MPS** (2RU) range of panels.

Offered in 6 sizes from 1-Gang (2MU) to a 6-Gang (12MU) designed to accept our new **Lite MPS** panels. Installation is straight forward; simply attach the **Wall Plate Adapter** to an existing electrical Gang Wall Box using the supplied hardware and you are done!



Then select from a wide range of panels to fill the space available and meet your termination needs. The smallest Adapter (1-Gang) will accept 2MU's, a pair of "A" size panels or a "B" size panel. The 2-Gang will accept 4MU's, the 3-Gang will hold 6MU's, the 4-Gang will hold 8MU's, the 5-Gang will hold 10MU's and the largest 6-Gang will hold 12MU's. This mean any combination of "A", "B" or "C" size blank and connectorized panels that will fill the space.

**1-Gang Sample**

**2-Gang Sample**

**3-Gang Sample**

